

Wyndham on the Park Subdivision

1055 Wyndham, Lansing, KS

*Spacious
home in pop-
ular
subdivision!*



Metro KC Rentals

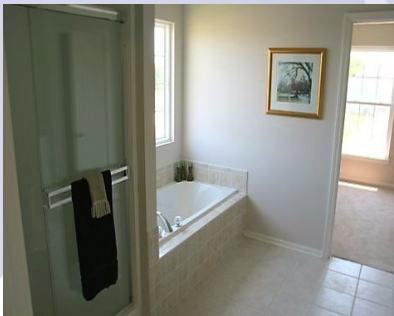
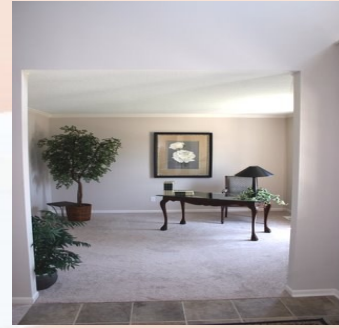
Matt Warner
913.547.5223
www.metrokcrentals.com

Email:
Matt.warner@metrokcrentals.com

- **Type of Rental:** Traditional two story with semi finished area in basement. Approx 2500 sq feet finished.
- **Monthly Rent:** \$1775
- Security deposit (one months rent) & Pet deposit if pet approved (1/2 months rent)
- **4 bedroom** all on UL
- **2.5 baths**, 2 on UL, .5 on ML. Master bath en suite has double vanity sinks and separate tub & shower.
- **Kitchen:** Appliances include Refrigerator, electric range oven, microwave, & dishwasher.
- Hardwood floors in kitchen & dining nook.
- Main floor living room with fireplace & formal living & dining rooms.
- Laundry room on main level.
- Central air & heat
- Concrete patio and backyard access off dining nook.
- **2 car garage**
- **Fenced Yard, wooden privacy**
- Lansing School District.
- Located in the Wyndham Subdivision, approx 15 minutes from Ft. Leavenworth.

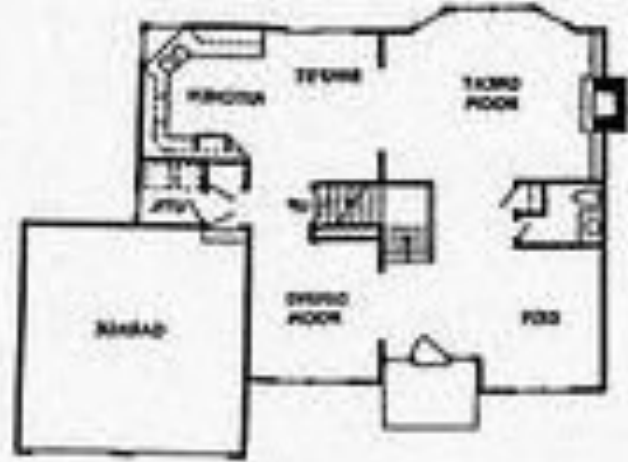
1055 Wyndham, Lansing, KS

Main level and 2nd story: Traditional 2 story with formal living room and dining room. Kitchen has dining nook and is open sight lines to family room with fireplace. Laundry & 1/2 bath are also located on this level. 2nd story has 4 bedrooms including large master with en suite. A hall bath services the other 3 bedrooms.



1055 Wyndham, Lansing, KS

LOWER LEVEL: Is semi finished with large area rug and vinyl plank flooring on a portion of the floor. Great for work out space or a man cave, etc. Offers lots of storage as well.



work not good and not available most year year smart look at

BACK YARD: Fully fenced with shadowbox style privacy fence, concrete patio, large deck which is accessible from kitchen/dining area.