

# 4708 Park Lane, Leavenworth, KS

**Great  
kitchen  
with  
granite!**



## Metro KC Rentals

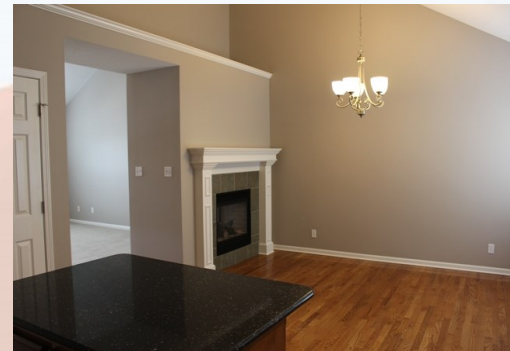
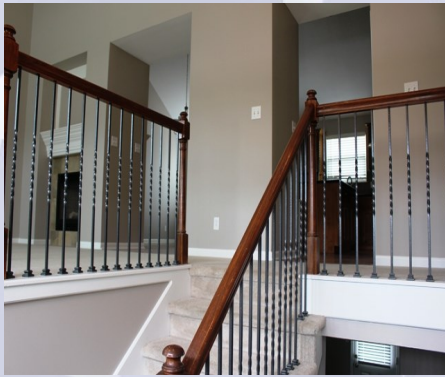
Metro KC Rentals  
913.547.5223  
[www.metrokcrentals.com](http://www.metrokcrentals.com)

Email:  
[Matt.waner@metrokcrentals.com](mailto:Matt.waner@metrokcrentals.com)

- **Type of Rental:** Split entry style home with approx 2207 sq feet finished, corner lot.
- **Monthly Rent:** \$1675
- Security deposit (one months rent) & Pet deposit if pet approved (1/2 months rent)
- **4 bedroom**, 3 UL, 1 LL
- **3 baths**, 2 on UL, 1 on LL. Master bath en suite has double vanity sinks.
- **Kitchen:** Appliances include Refrigerator, electric range oven, microwave, & dishwasher. Granite countertop upgrade & center island.
- Main floor Living room with double sided fireplace between dining/living room.
- Washer/Dryer hook ups: LL laundry room.
- Central air & heat
- Deck off dining room with stairs
- **2 car garage**, with storage area to front right side
- **Fenced Yard**, wooden privacy with trees to back
- Lansing School District.
- Easy access to 10th Avenue, approx 10 minutes from Ft. Leavenworth.

# 4708 Park Lane, Leavenworth, KS

**UPPER LEVEL:** Double sided gas fireplace separates dining (11'x12') & living room (15'x15'), which all sit on left side (south) of house. Kitchen to center back (11'x14') is open to dining area (left back) and both have wood floors. Master bedroom (approx 14' x 14') & master en suite are located on right side of house to back (Northwest side). Two bedrooms & bath are located right front side & center (above garage). Approximate upper level bedroom sizes are 11'x11' and 12'x10'.



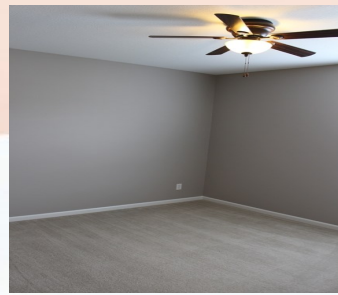
Master bedroom and bath en suite include double vanity sinks, shower/tub combo, separate toilet room with door, and large walk in closet.



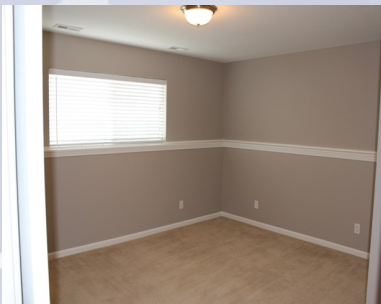


# 4708 Park Lane, Leavenworth, KS

Photos of two bedrooms on upper level and the hall bath.



**LOWER LEVEL:** Family room (14'x13') with walk out to outside are on left back corner of house. Access to garage at bottom of stair leading to entry and upper floor. A full bath with laundry is located to the back right side (northwest) of house. Fourth bedroom (13'x11') is located to front left (south side) of lower level.



Garage has storage space to front right side (north)



**BACK YARD:** Fully fenced, deck which is accessible from kitchen/dining area has steps to lower level concrete patio. House sits on corner lot and side street is dead end, trees to back yard for privacy.

