

## Whispering Hills Subdivision

# 2418 S 24th, Leavenworth, KS



- **Type of Rental:** Traditional Split entry style home with approx 2150 sq feet finished, walkout basement
- **Monthly Rent:** \$1650
- Security deposit (one months rent) & Pet deposit if pet approved (1/2 months rent)
- **4 bedroom**, 3 UL, 1 LL
- **3 baths**, 2 on UL to include master bath and hall bath, one LL with laundry area
- **Kitchen:** Appliances include Refrigerator, Gas oven range, microwave, dishwasher.
- Washer/Dryer hook ups LL to the back of bathroom.
- **Central air & heat**
- **Fenced yard**, picket wooden fence, two level deck
- **3 car garage**
- Leavenworth School District.

Quiet neighborhood with a country feel, located off 20th Street.

### Metro KC Rentals

Matt Warner  
913.547.5223  
[www.metroKcrentals.com](http://www.metroKcrentals.com)

Email:  
[Matt.Warner@MetroKcRentals.com](mailto:Matt.Warner@MetroKcRentals.com)



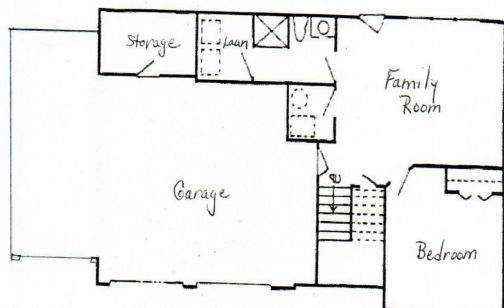
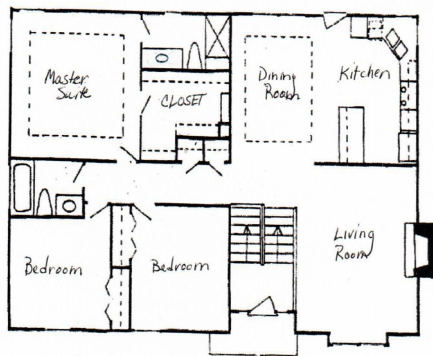
# 2418 S. 24th St, Leavenworth, KS





# 2418 S. 24th St, Leavenworth, KS

**LOWER LEVEL:** Family room, 4th bedroom, bath, and laundry room are located on this level. Family room walks out to back yard which is fully fenced.



Actual homes may vary from elevation and floorplan shown

**BACKYARD:** Deck access is from dining room which is a two level deck. Deck stairs lead onto a concrete patio. Fully fenced with wooden picket fence.

