

2117 Birch St, Leavenworth, KS



- **Type of Rental:** Split entry style home with approx 2450 sq feet finished.
- Security deposit (one months rent) & Pet deposit if pet approved (1/2 months rent)
- **5 bedroom**, 3 UL, 2 LL
- **3 baths**, 2 on UL, 1 on LL. Master bath en suite has double vanity sinks and walk in closet.
- Kitchen: SS & black appliances include Refrigerator, electric range oven, microwave, & dishwasher, center island.
- Main floor living room & LL family room with fireplace.
- Laundry room upper level
- Central air & heat
- Deck off dining room with stairs to back yard, concrete patio
- **3 car garage**
- **Fenced Yard, wooden privacy**
- Lansing School District.
- Located in the Branches Subdivision, approx 15 minutes from west gate of Ft. Leavenworth.

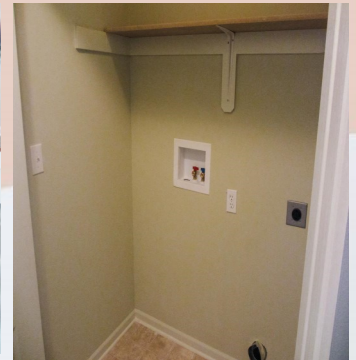
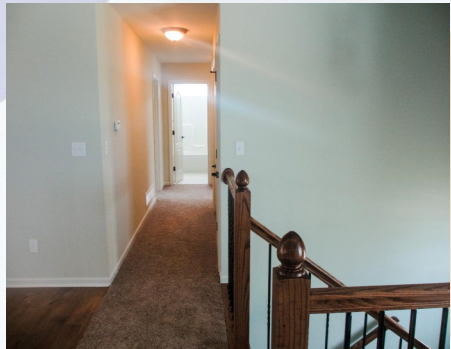
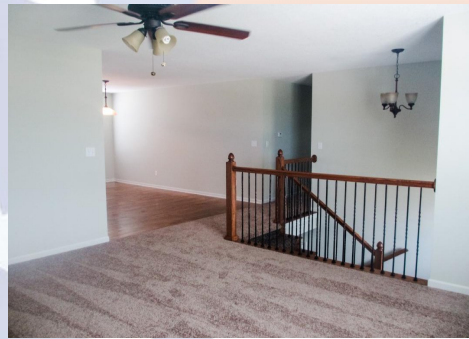
Metro KC Rentals

Matt Warner
913.547.5223
www.metrokcrentals.com

Email:
Matt.warner@metrokcrentals.com

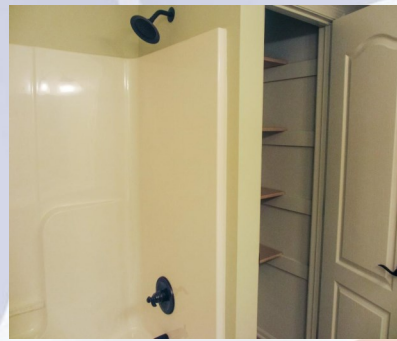
2117 Birch St, Leavenworth, KS

UPPER LEVEL: Large kitchen open to dining area next to living room. Three bedrooms are also located on this level to include master with en suite and a hall bath.



2117 Birch St, Leavenworth, KS

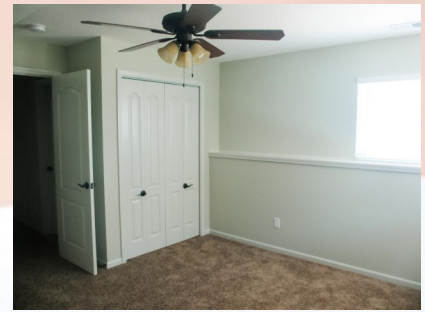
UPPER LEVEL: Large kitchen open to dining area next to living room. Three bedrooms are also located on this level to include master with en suite and a hall bath.



Floor plan under development,
please call for details on layout.

2117 Birch St, Leavenworth, KS

LOWER LEVEL: Family room with fireplace, located under the kitchen and dining area and to the back of the lower level. Two bedrooms are on this level as well as full bath. Access garage from this level. Garage is a 3 stall and very spacious!



BACK YARD: Fully fenced with shadowbox style privacy fence, concrete patio, large deck which is accessible from kitchen/dining area.

