

# 1022 Halderman, Leavenworth, KS

**Great  
Location!**



Metro KC Rentals

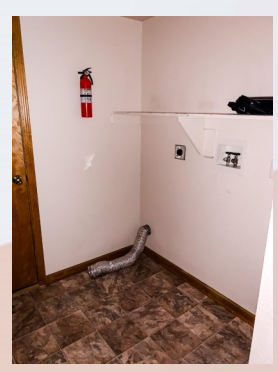
Matt Warner  
913.547.5223  
[www.metrokrentals.com](http://www.metrokrentals.com)

Email:  
[Matt.warner@metrokrentals.com](mailto:Matt.warner@metrokrentals.com)

- **Type of Rental:** Two story duplex with approx 1600 sq feet finished.
- Security deposit (one months rent) & Pet deposit if pet approved (1/2 months rent)
- **3 bedroom**, 3 UL, master with en suite
- **2.5 baths:** powder room on main level, 2 full on UL,
- **Kitchen:** Refrigerator, electric range/stove, microwave, dishwasher. Serving bar between kitchen & dining area.
- Main floor living room with fireplace.
- Washer/Dryer hook ups: Main level near garage entrance.
- Central air & heat
- Concrete patio and wood platform deck off dining nook
- **2 car garage**
- **Fenced Yard:** No
- Leavenworth School District.
- Approx 10 min from Ft. Leavenworth. Situated next to the Leavenworth High School. End unit with church and parking lot on West side.

# 1022 Halderman, Leavenworth, KS

**MAIN LEVEL:** Common areas are located on main level to include kitchen, living room, dining area, powder room and washer and dryer hook ups. Entrance from garage is between powder room and utility closet on one side and laundry closet on the other side. You then enter into the kitchen so hauling groceries, etc. is just steps from your car. Also located on this level is a closet pantry, spacious living room with fireplace and a dining area. Access to the backyard is from the dining area and through the sliding glass door. Back patio is concrete and there is also a wood deck approximately one foot off the ground which is a great space for all your patio furniture.



# 1022 Halderman, Leavenworth, KS

**UPPER LEVEL:** Three nice sized bedrooms are located on this level. Master bedroom has its own bathroom and a generous closet. The other two bedrooms share a full bath located in the hall. Loft offers space for an office, play room or storage.

