

2108 19th Ter, Leavenworth, KS



Metro KC Rentals

Matt Warner
913.547.5223
www.MetroKcRentals.com

Email:
Matt.Warner@MetroKcRentals.com

- **Type of Rental:** Front to back split entry style home with approx 2238 sq feet finished.
- Security deposit (one months rent) & Pet deposit if pet approved (1/2 months rent)
- **4 bedroom**, 3 UL, 1 LL
- **3 baths**, 2 on UL (hall and master en suite), 1 on LL.
- **Kitchen:** Kitchen appliances include Refrigerator, electric range oven, microwave, & dishwasher..
- **Fireplace:** Located in living room which is on same level as front door. Stairs lead up to UL and LL level by front entry.
- **Family Room:** LL with built-ins.
- **Washer/Dryer:** Hookups in LL hallway closet.
- Central air & heat
- Deck off dining room with stairs to back yard.
- **2 car garage.**
- **Fenced Yard.**
- Leavenworth School District.
- Easy access to 20th St, 10 minutes from West gate of Ft. Leavenworth.

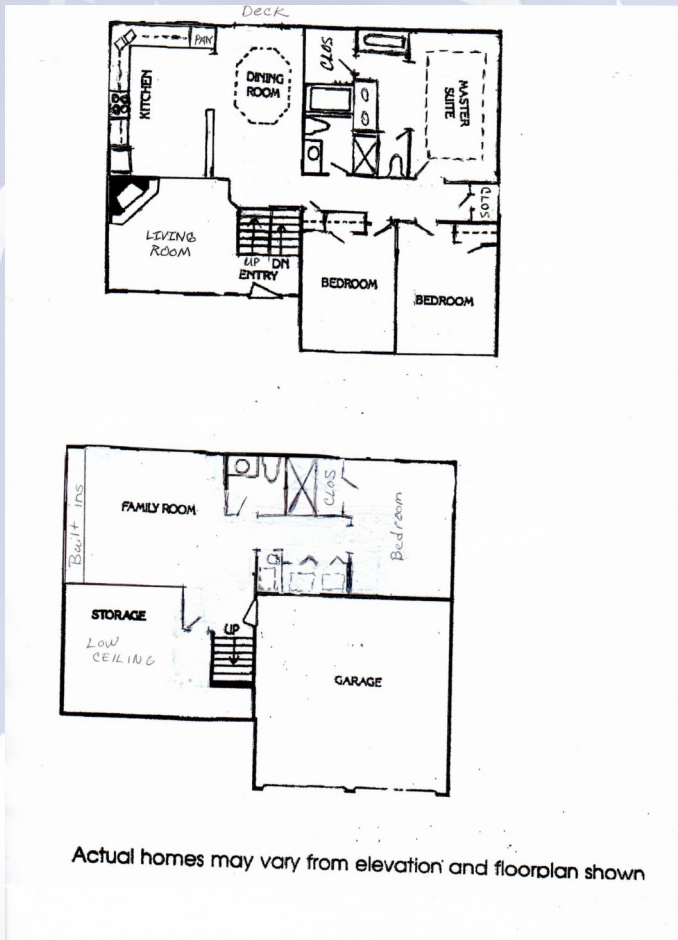
2108 19th Ter, Leavenworth, KS

UPPER LEVEL: Kitchen with lots of storage, is open to dining room. Access deck from dining area. Master and en suite as well as the other two bedrooms and a hall bath are located on this level.



2108 19th Ter, Leavenworth, KS

LOWER LEVEL: Has family room, 4th bedroom, laundry and hall bath. There is also storage under the stairs and under area of front living room. Access garage from this level. Private back yard with mature trees.



Actual homes may vary from elevation and floorplan shown

